

# 2017 Year in Review

Regional Fire Protection

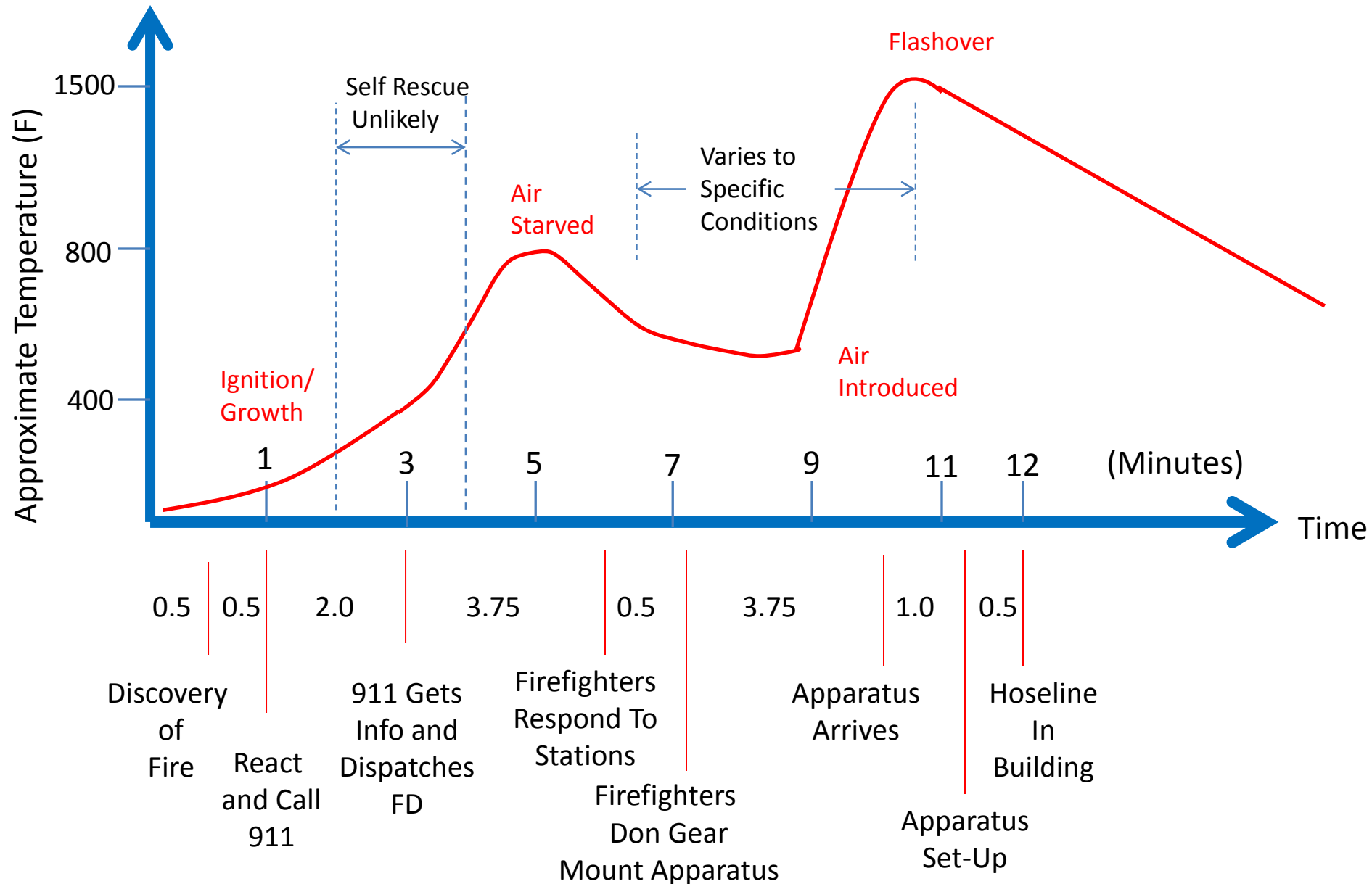
Steven W. Bair, Fire Director

# WE ARE.....

- Labor Intense
- Capital Intense
- Slow Compared to a Fire
- Assumed to be NOT Likely Needed by Most of Our Customers

[This is why government is in the fire protection business.]

# The Volunteer Fire Service



# It Takes People

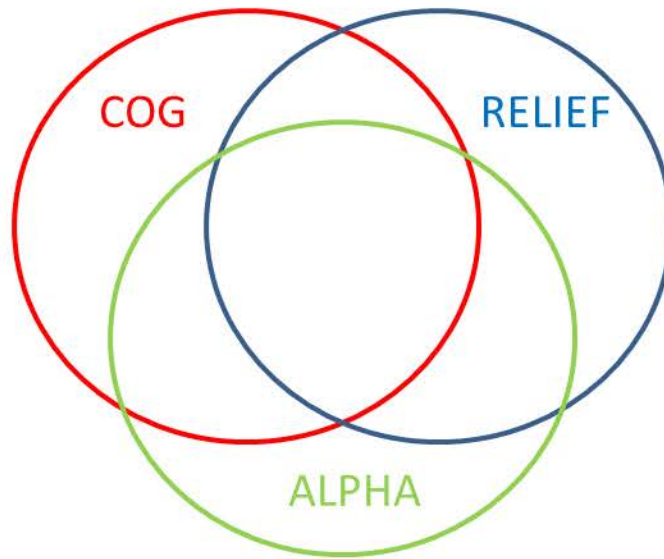
	Position	Minimum	Desirable	Best	Notes
HYDRANT AVAILABLE	Commander	1	1	1	Strategy and Control
	Accountability	0	1	1	Handled by Command if not staffed
	Safety	0	1	1	Handled by Command if not staffed
	Pump Operator	1	1	1	Runs the Fire Engine pump
	Attack Line	2	3	6	Extinguishes fire
	Back Up Line	2	3	6	Protects the attack line/asst extinguish
	Water Supply	0	1	1	Connects engine to hydrant/ctl hydrant
	Search	4	2	4	Verifies no civilians in peril
	Vent/Salvage		2	2	Opens windows/roof to remove heat/smoke
	Utility Control		1	2	Kills the power and gas, assist salvage
	RIT	2	4	4	Firefighter rescue (2 in/ 2 out rule)
	SUB TOTAL	12	20	29	
NO HYDRANT	Pump Operator	1	1	1	Runs fill site engine pump
	Fill Site Labor	0	1	2	Connects/disconnects hoses to tankers
	Tanker 1	1	2	2	Operate tanker
	Tanker 2	1	2	2	Operate tanker
	Tanker 3	1	2	2	Operate tanker
	Water Supply Off	1	1	1	Coordinates tanker movements
	TOTAL	17	29	39	

Note      This model assumes the fire is extinguished in less than 20 minutes.  
This model assumes that overhaul can be handled by the same personnel that extinguished the fire.

Firefighting is Labor Intensive.

# Regional Fire Protection

Tax Funding  
Career Staff  
Vehicles  
Stations  
Equipment  
Fire Marshals  
Codes



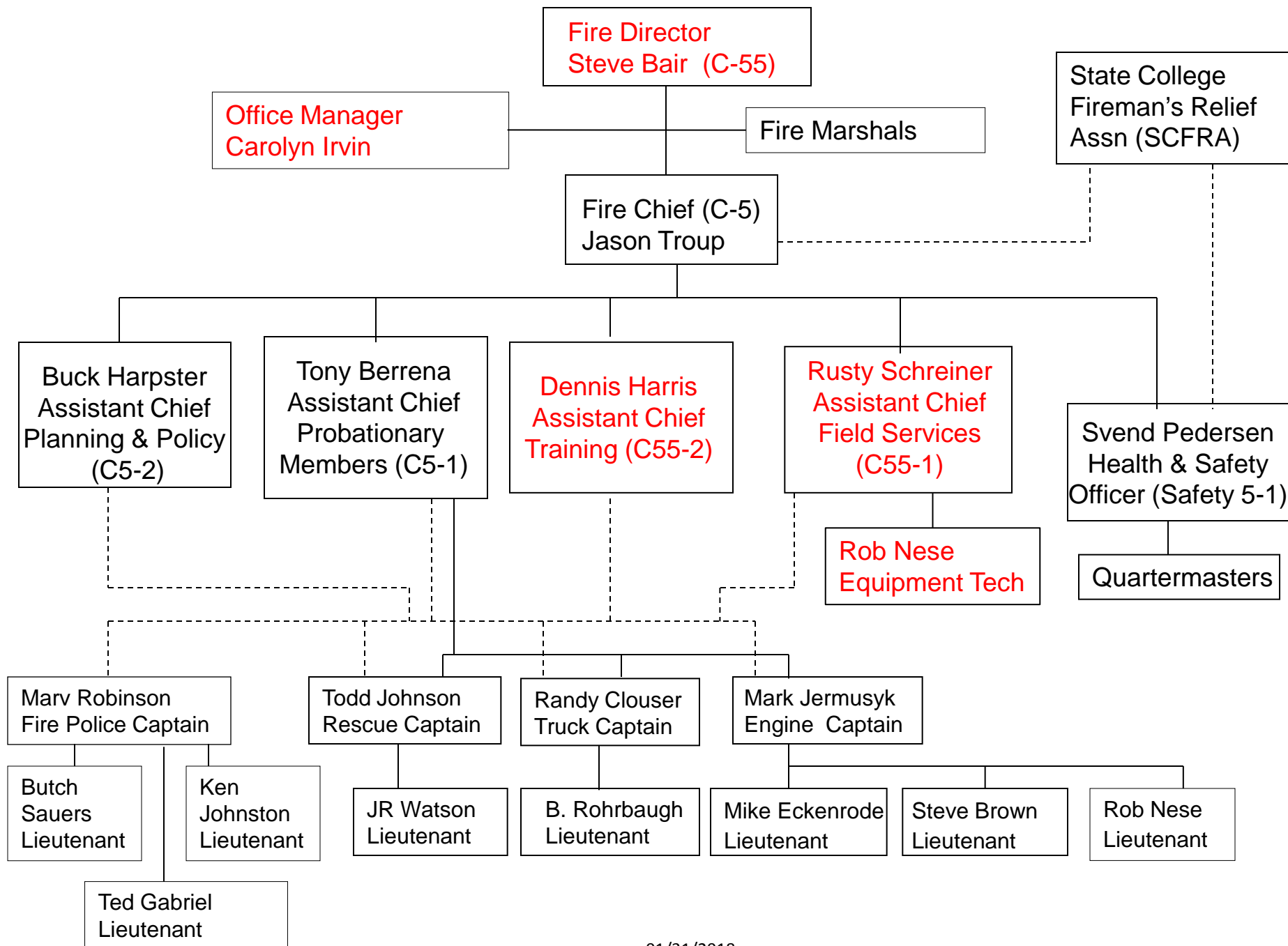
Insurance  
Equipment  
Training Funds

Volunteer Staff  
Donation Funds  
Grant Access  
Member Amenities

The Regional Fire Protection Program is comprised of three entities that work well together for a common purpose.

# Quick Facts

- 97 Volunteers
- 104 Square Miles
- 93,000 Population (steady)
- 5 Municipalities and Penn State University
- 1,359 Incidents (2017 Total)
- ~100 Incidents Providing Mutual Aid (3-yr average)

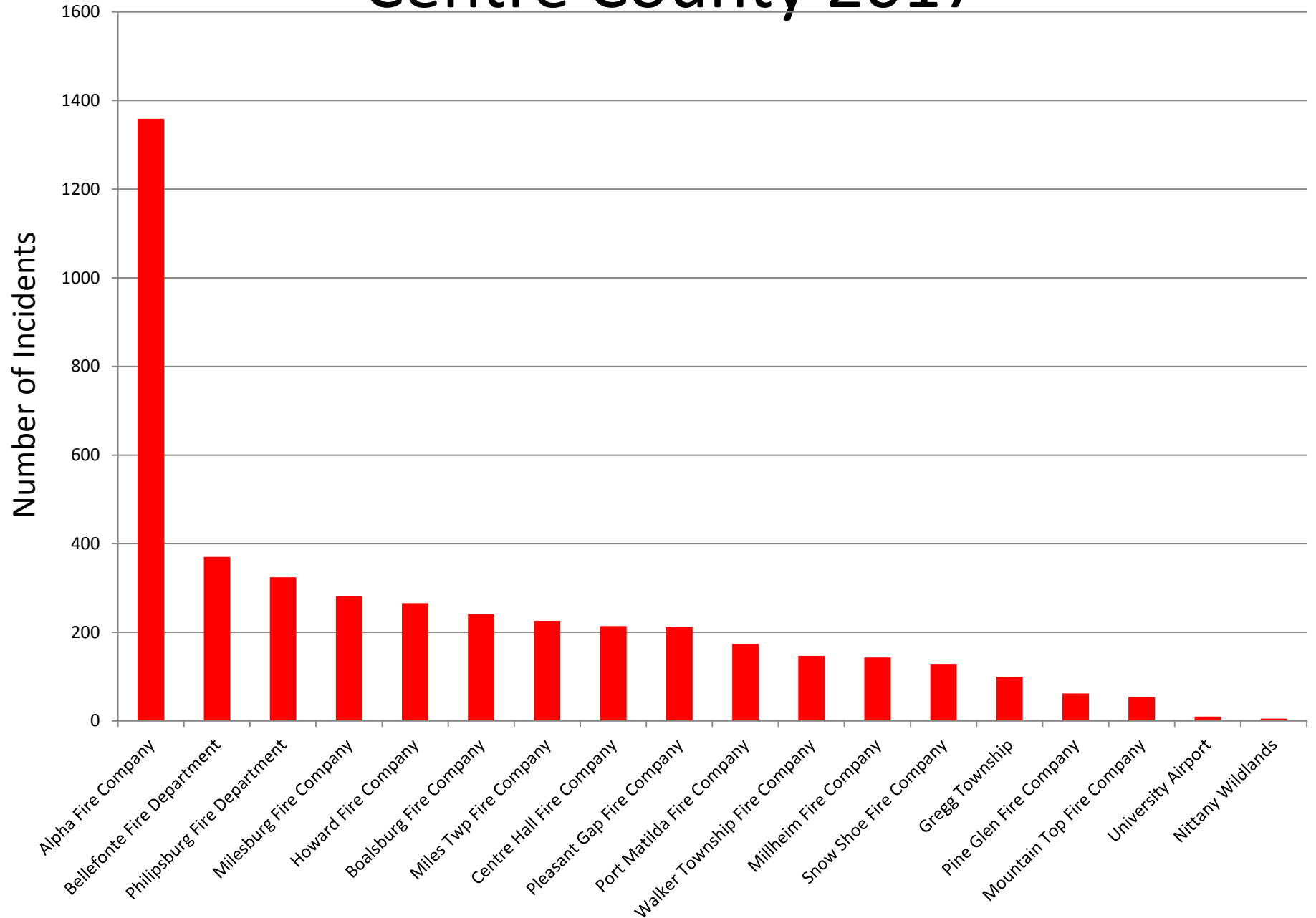


# Incident Summary 2017

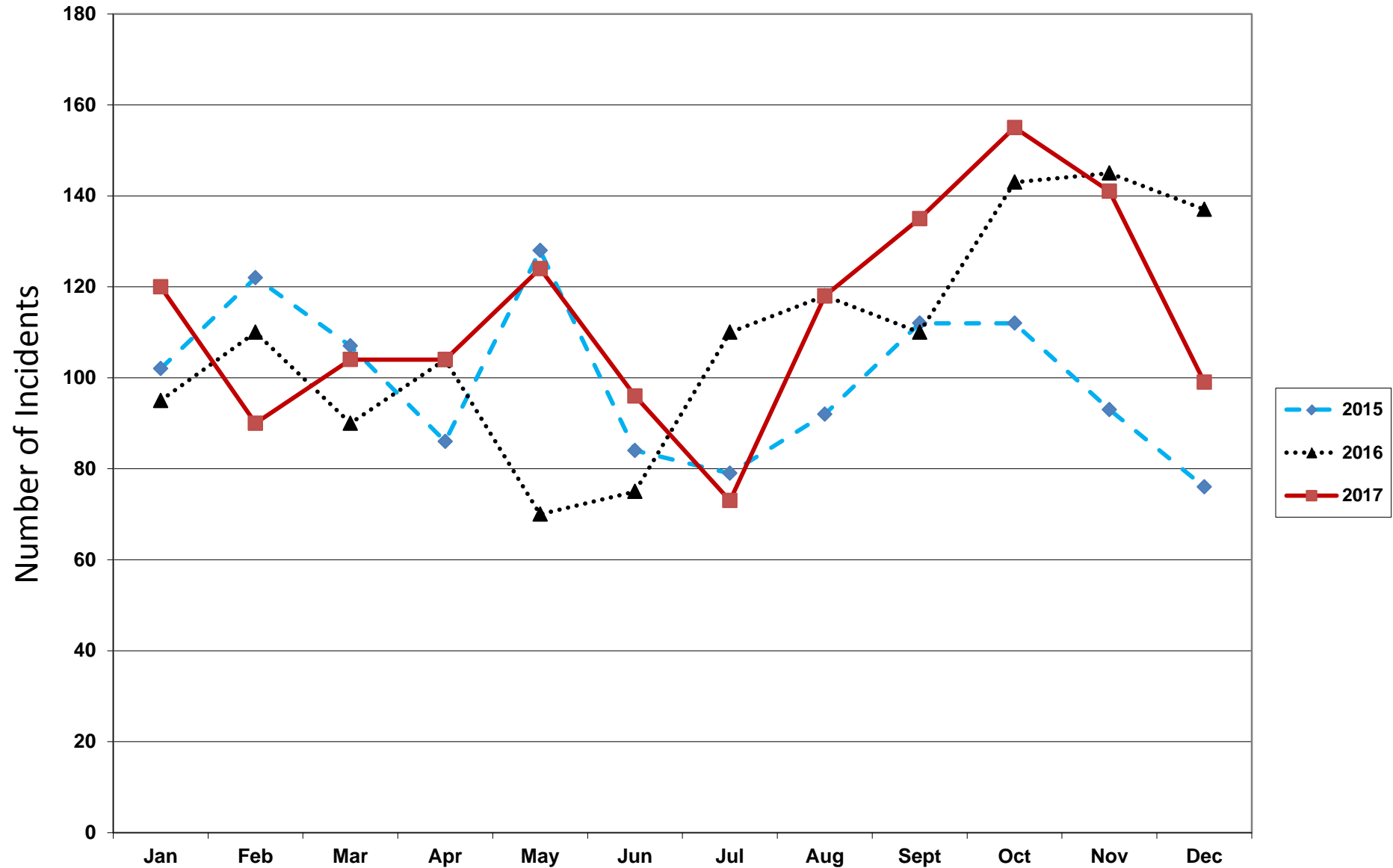
- 1,359 Incidents Dispatched
- 1,266 In Alpha First Due Area
  - 7.4% Increase Over 2016 First Due
  - 10 Significant Structure Fires (w/Building Losses)
  - 12 Technical Rescues
- 93 Mutual Aid Incidents (Outside Our First Due)
  - 27% decrease from 2016



# Centre County 2017



# Alpha Monthly Incident History

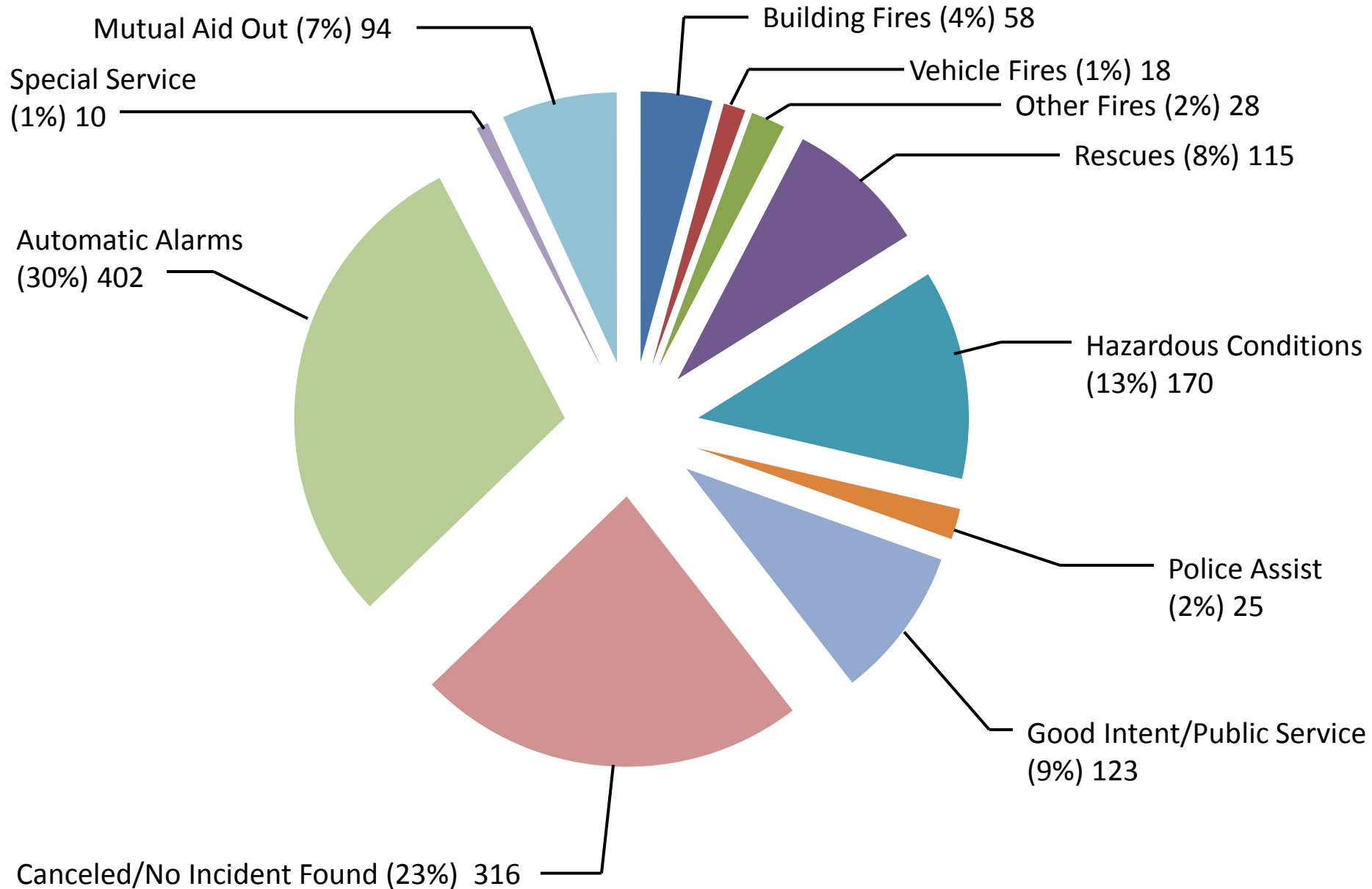


# 2017 Incidents By Municipality

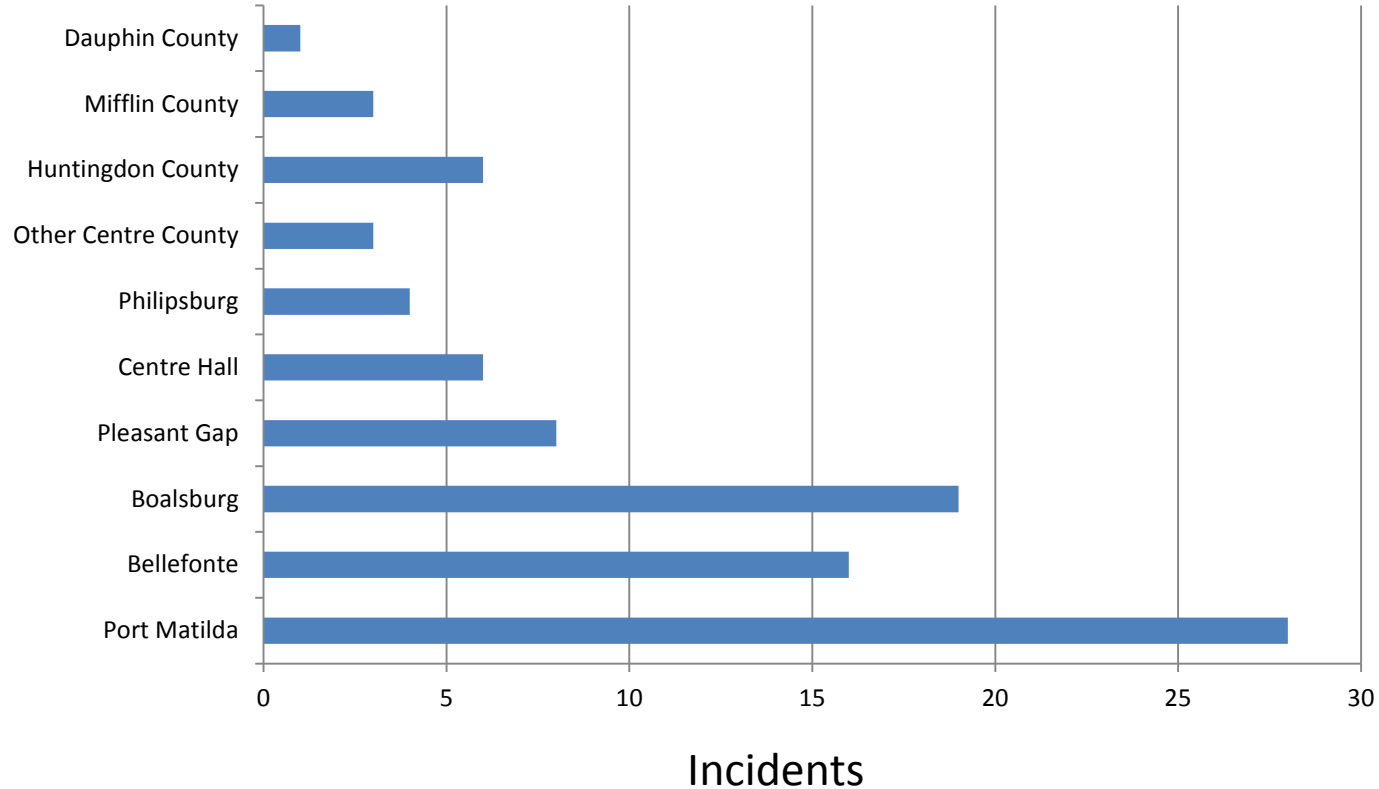
	Building	Vehicle	Other Fire	Rescue	HazCon	PD Assist	Good Intent/ Pub Svc	Cancel	Auto Alarm	Special/ Other	TOTAL
College Township (5)	1	7	5	31	16	6	10	42	38	3	159
College Township (3)	1	3	1	10	8	2	1	0	7	0	33
Ferguson Township	10	4	3	17	39	3	15	41	30	1	163
Halfmoon Township (15)	1	0	1	7	4	0	6	0	2	0	21
Harris Township (3)	8	1	4	37	27	5	18	0	17	2	119
Patton Township	8	2	8	21	33	4	21	48	36	1	182
State College Borough	38	5	11	44	72	10	56	165	267	3	671
University Park	3	0	1	1	7	2	8	19	31	10	82
Benner Township (5)	0	0	0	1	3	0	2	1	0	0	7
	Building	Vehicle	Other Fire	Rescue	HazCon	PD Assist	Good Intent/ Pub Svc	Cancel	Auto Alarm	Special/ Other	2016 Est Pop
College Township (3 & 5)	0.20	1.02	0.61	4.16	2.44	0.81	1.12	4.26	4.57	0.30	9850
Ferguson Township	0.55	0.22	0.16	0.93	2.13	0.16	0.82	2.24	1.64	0.05	18527
Halfmoon Township (15)	0.37	0.00	0.37	2.58	1.48	0.00	2.22	0.00	0.74	0.00	2664
Harris Township (3)	1.54	0.19	0.77	7.12	5.19	0.96	3.46	0.00	3.27	0.38	5198
Patton Township	0.51	0.13	0.51	1.33	2.09	0.25	1.33	3.04	2.28	0.06	15197
State College Borough	1.34	0.18	0.39	1.55	2.54	0.35	1.97	5.81	9.40	0.11	29275
University Park	0.22	0.00	0.07	0.07	0.51	0.15	0.58	1.39	2.26	0.73	13700

The lower portion of this chart is incidents by type PER 1000 PERSONS. These rates are compared year to year to identify trends. Overall, building fire incident rates are fairly flat from 2016 while all other service requests have increased in all municipalities.

# 2017 Alpha Incidents By Type

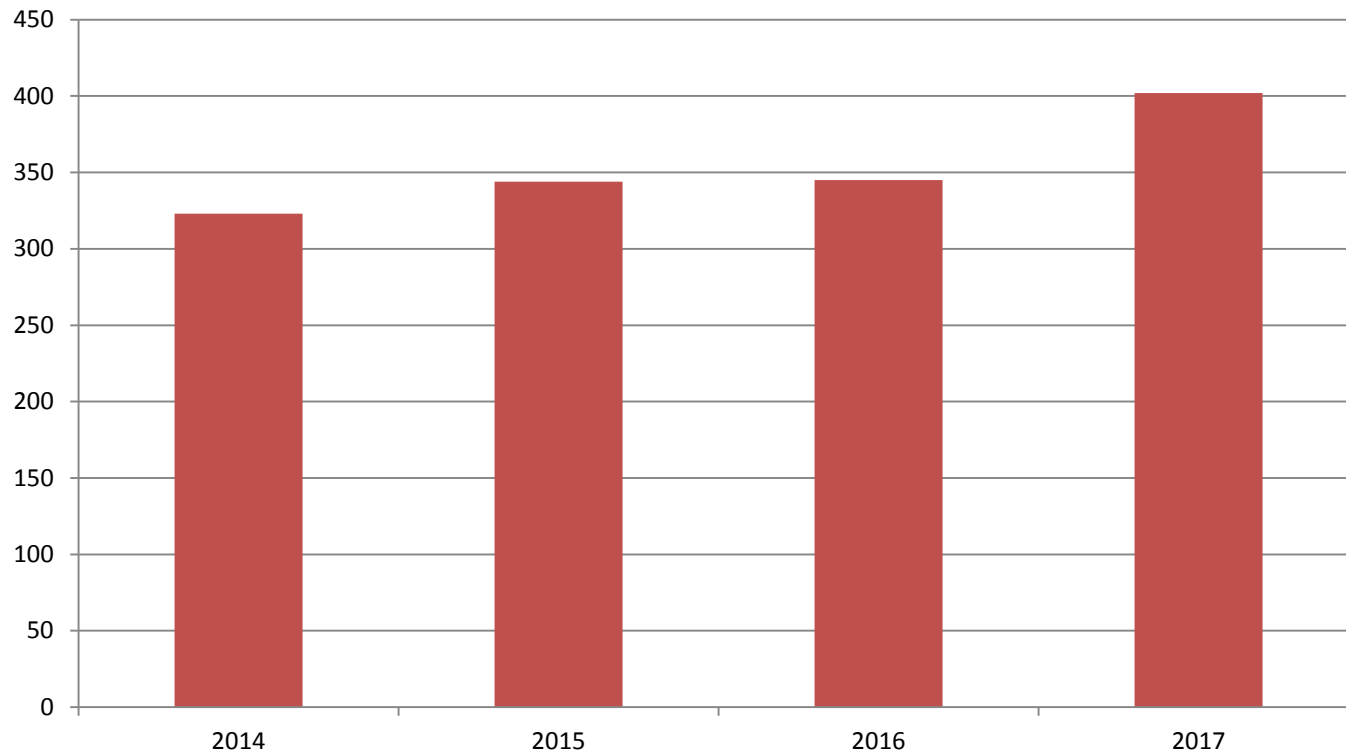


# 2017 Alpha Mutual Aid Out



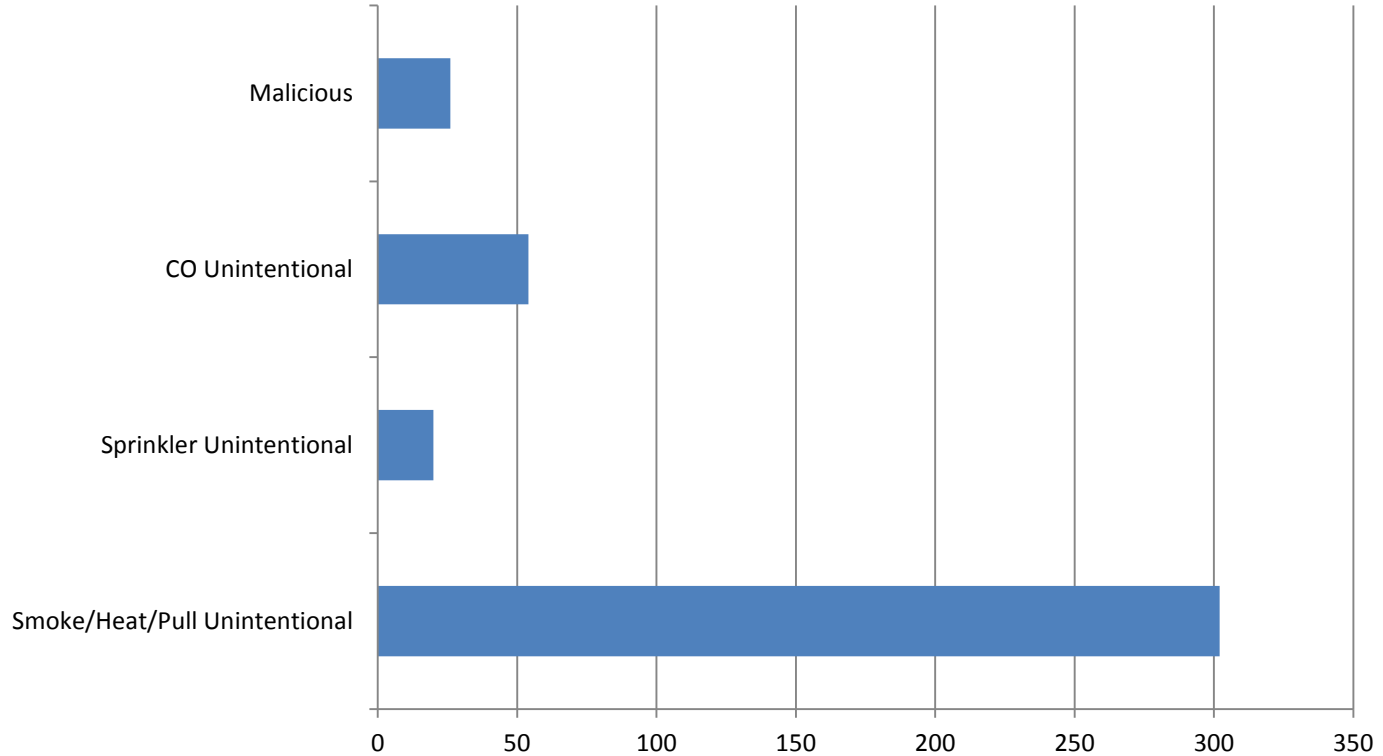
Other Centre County includes: Howard, Milheim, and Snow Shoe

# Automatic Alarm History



Most, but not all, automatic alarms are unintentional. Many cooking related fires and water flows are originally reported as automatic alarms. Efforts are made to reclassify alarms based on the actual conditions found.

# 2017 Automatic Alarms By Source



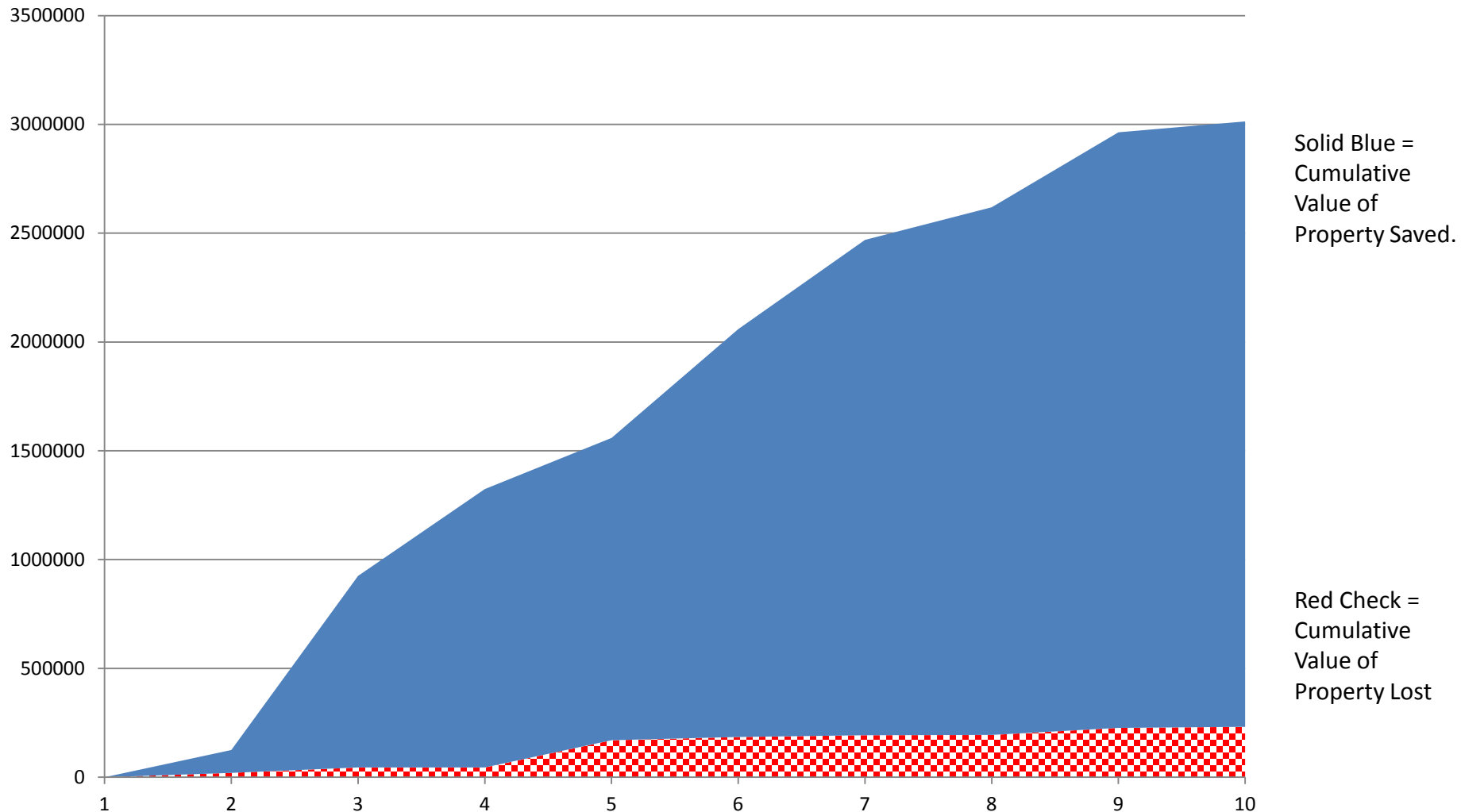
Alarms are up 17.2% from 2016. The largest increase is in malicious false alarms which more than doubled, and unintentional alarms caused by failure to put the alarm in “test” mode during service/construction (+8.2%).

# Alpha Response Performance

ALPHA FULL YEAR		2017						
		Benner Twp	College Twp	Ferguson Twp	Patton Twp	SC Borough	University	Region
Rural	14 Minutes	100%	98%	97%	96%	100%	100%	99%
	6 Personnel	100%	99%	100%	100%	99%	100%	100%
Suburban	10 Minutes	100%	93%	83%	70%	97%	94%	90%
	10 Personnel	100%	92%	95%	88%	90%	94%	93%
Urban	9 Minutes	33%	86%	80%	53%	92%	84%	71%
	15 Personnel	67%	50%	68%	63%	60%	69%	63%



# 2017 Fire Loss - Buildings



This data only includes fires involving damage to the actual structure. It does not include fires in structures such as ovens and appliances, lab or process equipment, flues, occupant contents, HVAC motors and equipment, etc. In these 10 incidents we saved approximately \$2,781,730 of building value, while property owners experienced building losses of approximately \$231,740.

# Fire Investigations

- Six Investigations Conducted
- One Active Deposition



# 2017 Hazmat

- Since 2013 Regional Fire Protection has Provided Direct Support to Penn State Hazmat
  - All Team Training and Exercise
  - Joint Response and Training at Decon and Technician Levels
  - Equipment Maintenance and Procurement
  - 8 Hazmat Responses; 3 Responses in Centre Region

Penn State continues to be the sole funding source for regional hazmat. The Regional Fire Protection Program is providing expertise and staff time as 'gift in kind' to Penn State in exchange for a vehicle and various equipment provided to the fire department.

# Public Education & Outreach

In 2017 Alpha Fire Company & Program Staff facilitated:

- 34 Events
  - Requiring 86 Work Hours
  - Serving 3,974 people of all ages
- \*\*Figures Exclude the Annual Santa Run and FourthFest.





# 2017 Responses

- Alpha Volunteers Provided 11,433 hours ON SCENE (excludes preparation, returning, and clean-up time)



# Training

- Alpha Volunteers Completed 7,468 hours of Formal Training. (Approximately 72 hours per member)







THANK YOU  
For Your  
Support !

